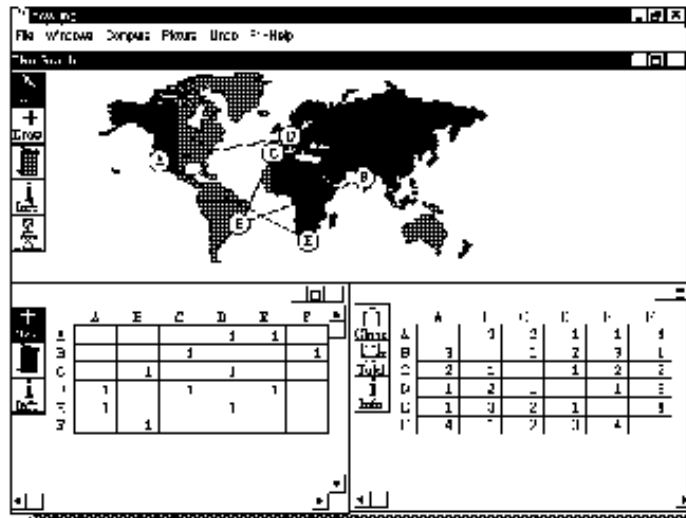
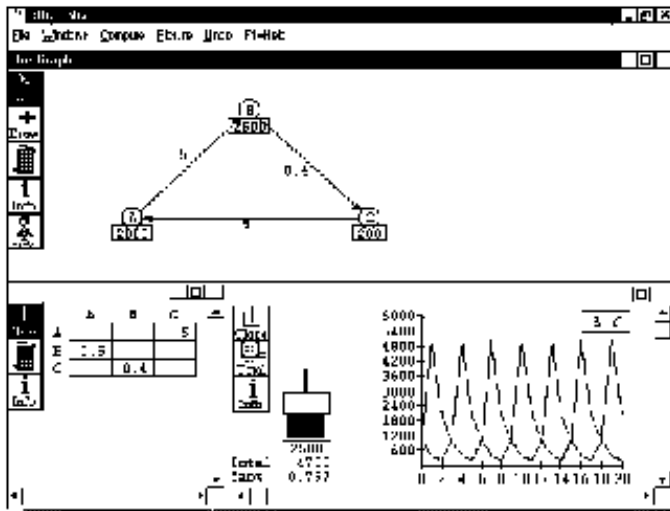


Mathematical Modeling: Using Graphs and Matrices

Mathematical Modeling allows the user to visualize real-world situations on screen. The user can make connections on the picture while the program builds a matrix interpreting those connections.



Mathematical Modelling: Using Graphs and Matrices enables students to appreciate the power of mathematics to help them understand the world. Matrices provide a powerful mathematical tool to help model situations like airline or car routes, co-operation and competition, traffic patterns, and population problems. Because most real situations are complex, the program and materials also help develop understanding of the limitations of modelling.



Students can change variables easily to see the effect on the problem; and multiple views give the students insight into their relationship and significance. The disk contains over 10 problems correlated to reproducible Student Worksheets in the Teacher's Guide.

Developed by Michiel Doorman and Jan de Lange from the Freudenthal Institute, Utrecht University, Netherlands. The package contains a disk with problem sets, back up, Teacher's Guide with reproducible worksheets for classroom use. Requirement: Win 3.1 or higher. Contact for latest prices. In Southern Africa, available from: Michael de Villiers, 8 Cameron Rd., Pinetown 3610. Tel: 031-7083709. Fax: 031-2044866. E-mail: profmd@mweb.co.za.